



**High
Plains
Sportsmen Club**

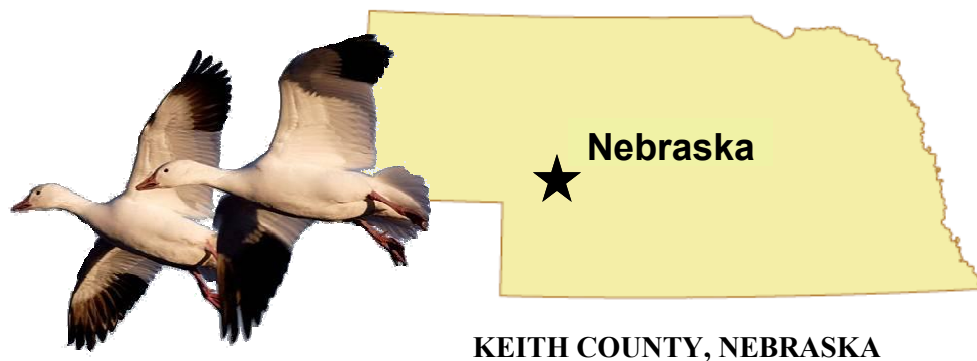
White Feathers

308280

CANADA GOOSE • SNOW GOOSE

This property is located off Interstate 80 in Nebraska across from the Platte River and south of Lake McConaughy State Wildlife Area. Decoys will be helpful in attracting the geese to the property. There is a circular where you can hunt with decoys for waterfowl. You can use natural cover, irrigation ditches or portable layout blinds to hunt geese.

This property will be great for the late snow goose season!



KEITH COUNTY, NEBRASKA

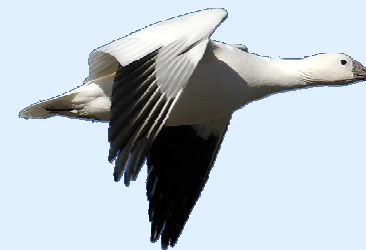
RULES AND REGULATIONS:

- ◆ **DECOY HUNTING ONLY—No sky busting geese.**
- ◆ **No camping—Camping is available along the river on the Ogallala property campsites.**
- ◆ **Stay on the roads – Do not drive on the fields.**
- ◆ **ATV's are OK for transporting decoys into the field.**
- ◆ **Close and lock all gates at all times.**
- ◆ **Please remove all trash including your shell casings.**
- ◆ **Reservations and placards are required on all properties.**

✦ DIRECTIONS:

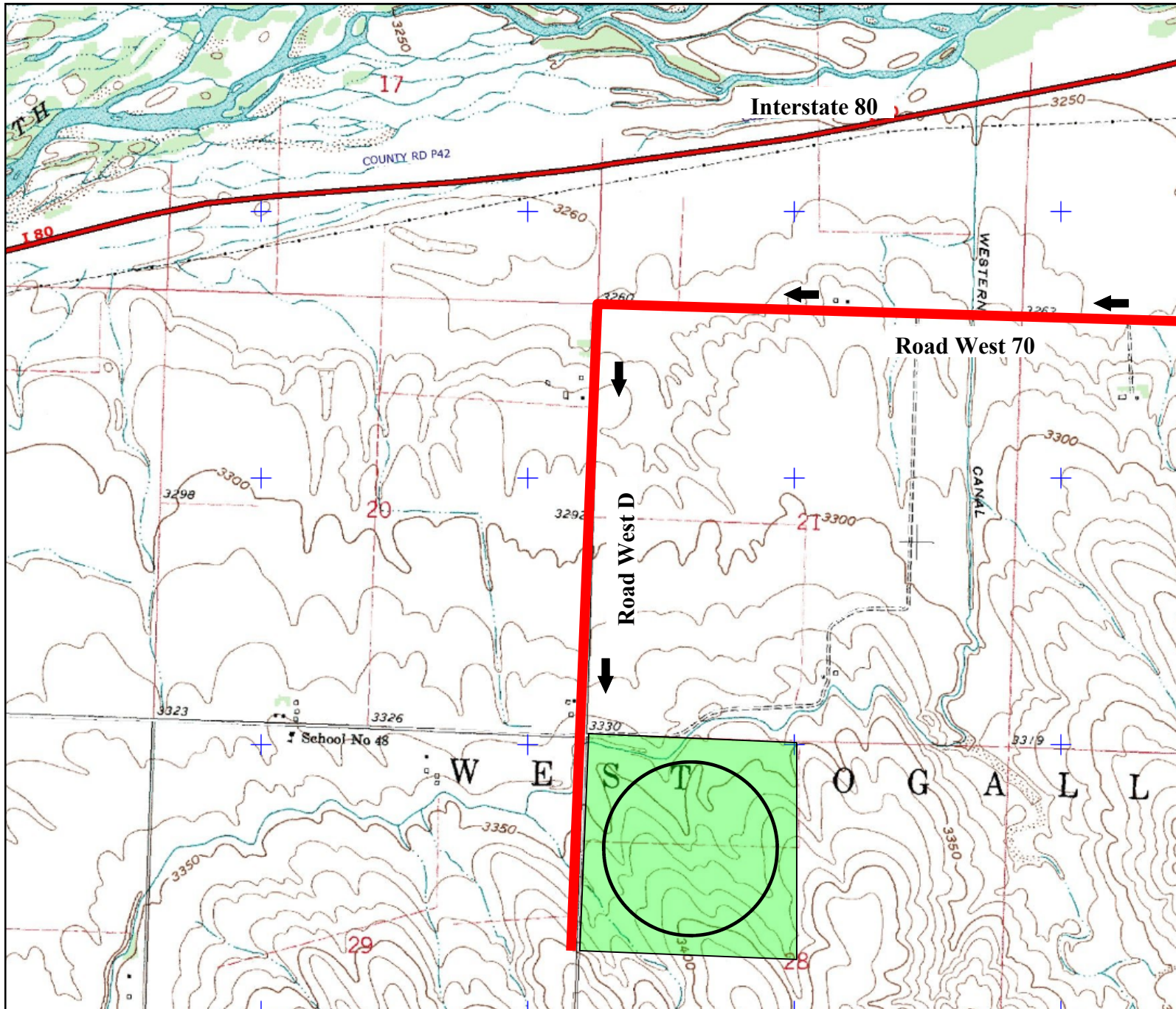
On Interstate 80, take the only exit at Ogallala, Nebraska. Go south for .7 miles to road West 80. Turn right for 1.5 miles (it will dead end) and go left on road West A for 1 mile to road West 70. Turn right for 2.9 miles to West D (it will dead end) and turn left. Go approximately 1 mile and the property starts on the left hand side.

Close and lock all gates!



SHERIFF: 308-284-2011

HOSPITAL: 308-284-3645



High
Plains
Sportsmen Club

White Feathers

Nebraska



For club member use only.
Do not reproduce or distribute.

Property boundaries are
approximate. Reference a
detailed map and look for
property boundary
posting signs.

© COPYRIGHT 2011
High Plains Sportsmen Club