



**High  
Plains  
Sportsmen Club**

## Southern Winds

843280

**CANADA GOOSE • SNOW GOOSE**

This property is located off Interstate 80 in Nebraska across from the Platte River and south of Lake McConaughy State Wildlife Area. Decoys will be helpful in attracting the geese to the property. You can use natural cover, irrigation ditches or portable layout blinds to hunt geese.

This property will be great for the late snow goose season!



**KEITH COUNTY, NEBRASKA**

### **RULES AND REGULATIONS:**

- ◆ **DECOY HUNTING ONLY—No sky busting geese.**
- ◆ **No camping—Camping is available along the river on the Ogallala property campsites.**
- ◆ **Stay on the roads – Do not drive on the fields.**
- ◆ **ATV's are OK for transporting decoys into the field.**
- ◆ **Close and lock all gates at all times.**
- ◆ **Please remove all trash including your shell casings.**
- ◆ **Reservations and placards are required on all properties.**



### **DIRECTIONS:**

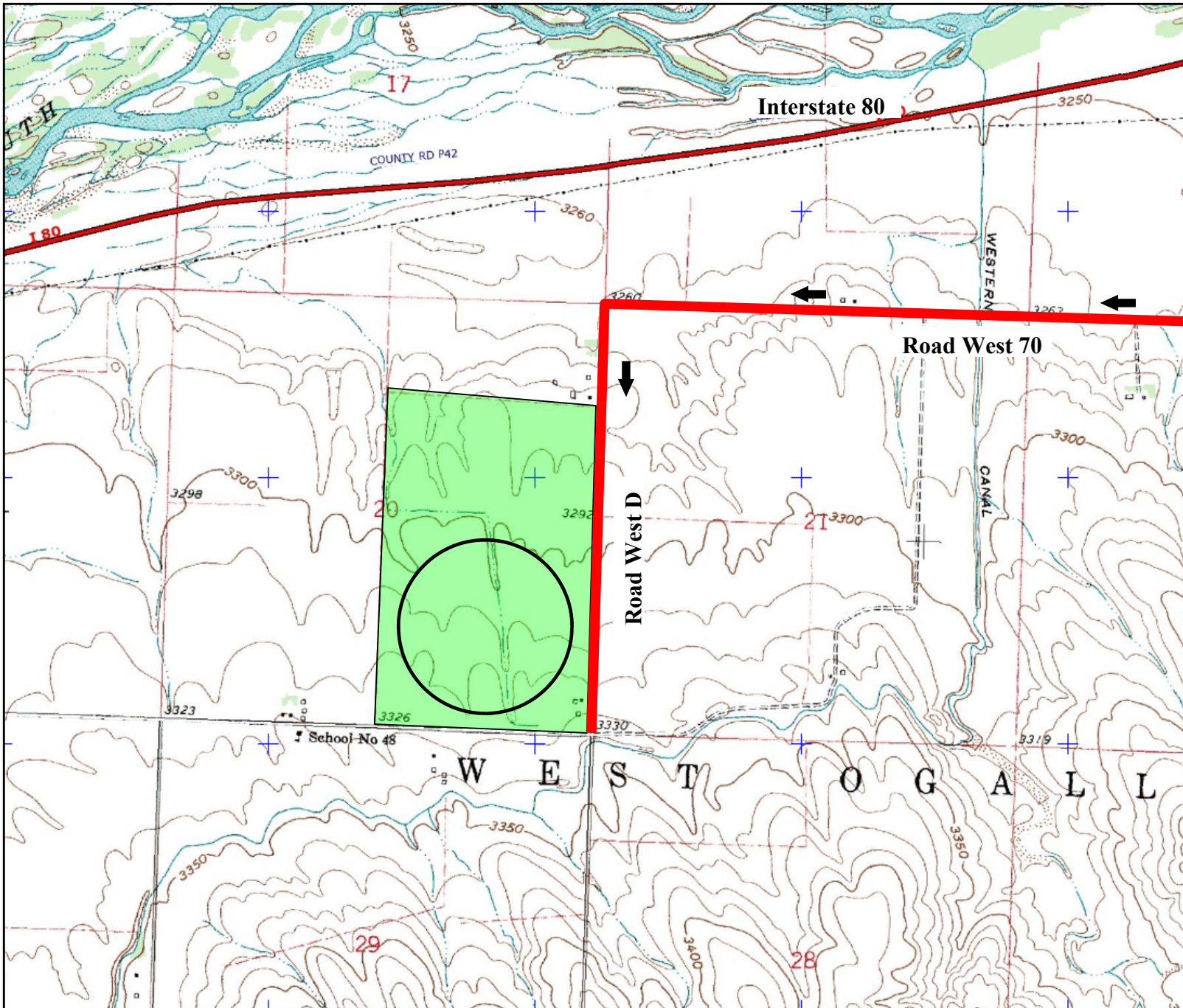
On Interstate 80, take the only exit at Ogallala, Nebraska. Go south for .7 miles to road West 80. Turn right for 1.5 miles (it will dead end) and go left on road West A for 1 mile to road West 70. Turn right for 2.9 miles to West D (it will dead end) and turn left. Go approximately 1/2 mile and the property starts on the right hand side.

Close and lock all gates!

**SHERIFF: 308-284-2011**

**HOSPITAL: 308-284-3645**





High  
Plains  
Sportsmen Club

## Southern Winds

Nebraska



For club member use only.  
Do not reproduce or distribute.

Property boundaries are  
approximate. Reference a  
detailed map and look for  
property boundary  
posting signs.

© COPYRIGHT 2011  
High Plains Sportsmen Club