

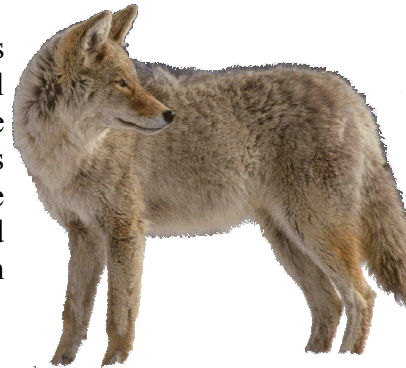


Horse Creek Ranch 2

888866

ANTELOPE • COYOTE • DOVE • PRAIRIE DOG • VARMINT

This is a very large eastern plains ranch in Colorado which is over 30,000 acres with Horse Creek Ranch #1. Here you will have no problem finding an antelope. You will find Horse creek flowing through, Box Springs Lake and several ponds that can be good jump shooting for ducks and excellent dove hunting. This ranch has good populations of coyote and prairie dogs. Stay on established roads and off the grass with vehicles.



CROWLEY COUNTY, COLORADO

This is a great ranch to enjoy!

RULES AND REGULATIONS:

- ◆ No target practice or sighting in guns.
- ◆ Stay on established roads—Do not drive on the grass.
- ◆ ATV's are OK on designated roads—No motorcycles allowed.
- ◆ No restroom facilities are available. Port-a-potty is necessary.
- ◆ No hunting around the ranch headquarters.
- ◆ Close and lock all gates at all times.
- ◆ Please remove all trash including your shell casings.
- ◆ Reservations and placards are required on all properties.



DIRECTIONS:

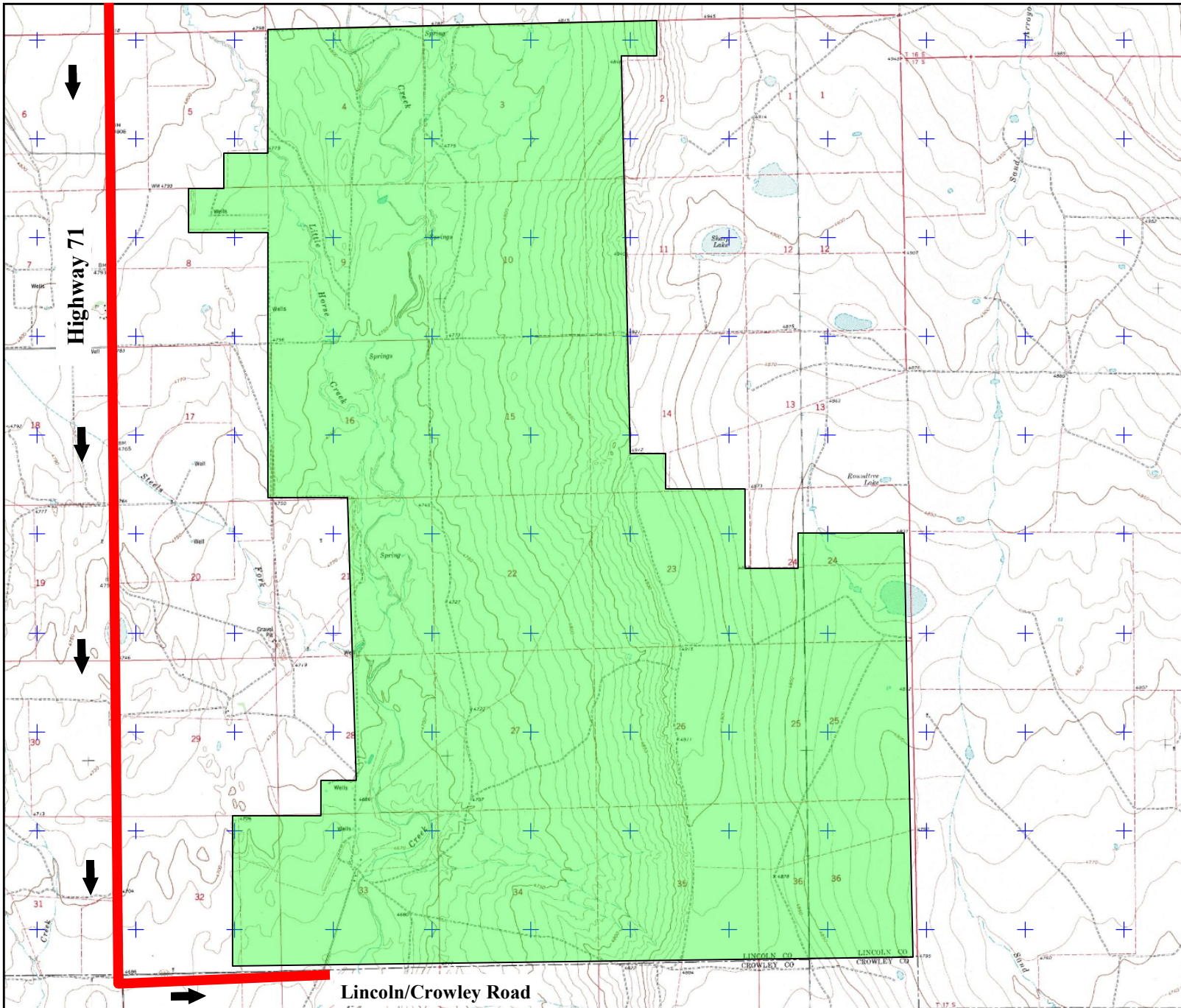
From Pumpkin Center, Colorado which is at the crossroads of highway 94 from Colorado Springs, and Highway 71 from Limon, take highway 71 south toward the town of Ordway. Go approximately 26.2 miles to road BB and turn left. Go 1 mile to an old homestead on your right hand side. This is the base camp area. To hunt Horse Creek #2, go north on Highway 71 to the sign saying Lincoln/Crowley County line and turn right on this road to enter the property.

Close and lock all gates!

SHERIFF: Otero County 384-5941

HOSPITAL: Pioneer Memorial Hospital—Rocky Ford 254-3314





High
Plains
Sportsmen Club

Horse Creek Ranch 2

Colorado



For club member use only.
Do not reproduce or distribute.

Property boundaries are
approximate. Reference a
detailed map and look for
property boundary
posting signs.

© COPYRIGHT 2011
High Plains Sportsmen Club