



**High
Plains
Sportsmen Club**

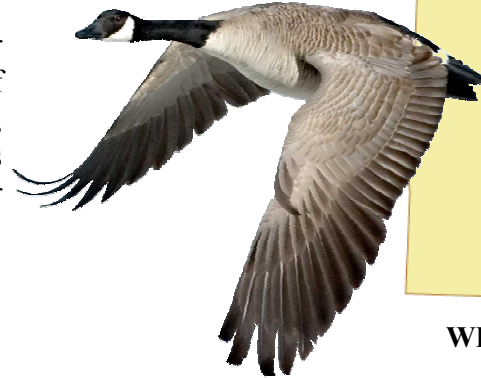
Gregory's Field

214114

CANADA GOOSE • DUCK

This is a very good field for goose hunting when the weather is right. Here you are in sight of the water treatment plant of Northglenn, Colorado which never freezes in winter, making for good duck and goose hunting in the area. There is an excellent ditch to hide in on the field and plenty of cover for portable layout blinds.

Enjoy the geese!



WELD COUNTY, COLORADO

RULES AND REGULATIONS:

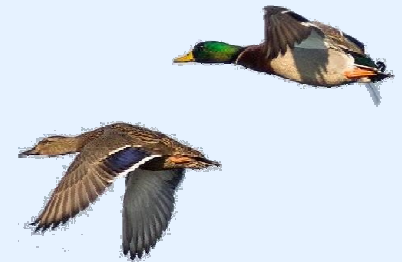
- ◆ **DECOY HUNTING ONLY—No Sky Busting.**
- ◆ **Stay on established roads—You must carry decoys and equipment into the fields.**
- ◆ **Portable hunting blinds are recommended.**
- ◆ **Watch out for livestock.**
- ◆ **Close and lock all gates at all times.**
- ◆ **Please remove all trash including your shell casings.**
- ◆ **Reservations and placards are required on all properties.**



DIRECTIONS:

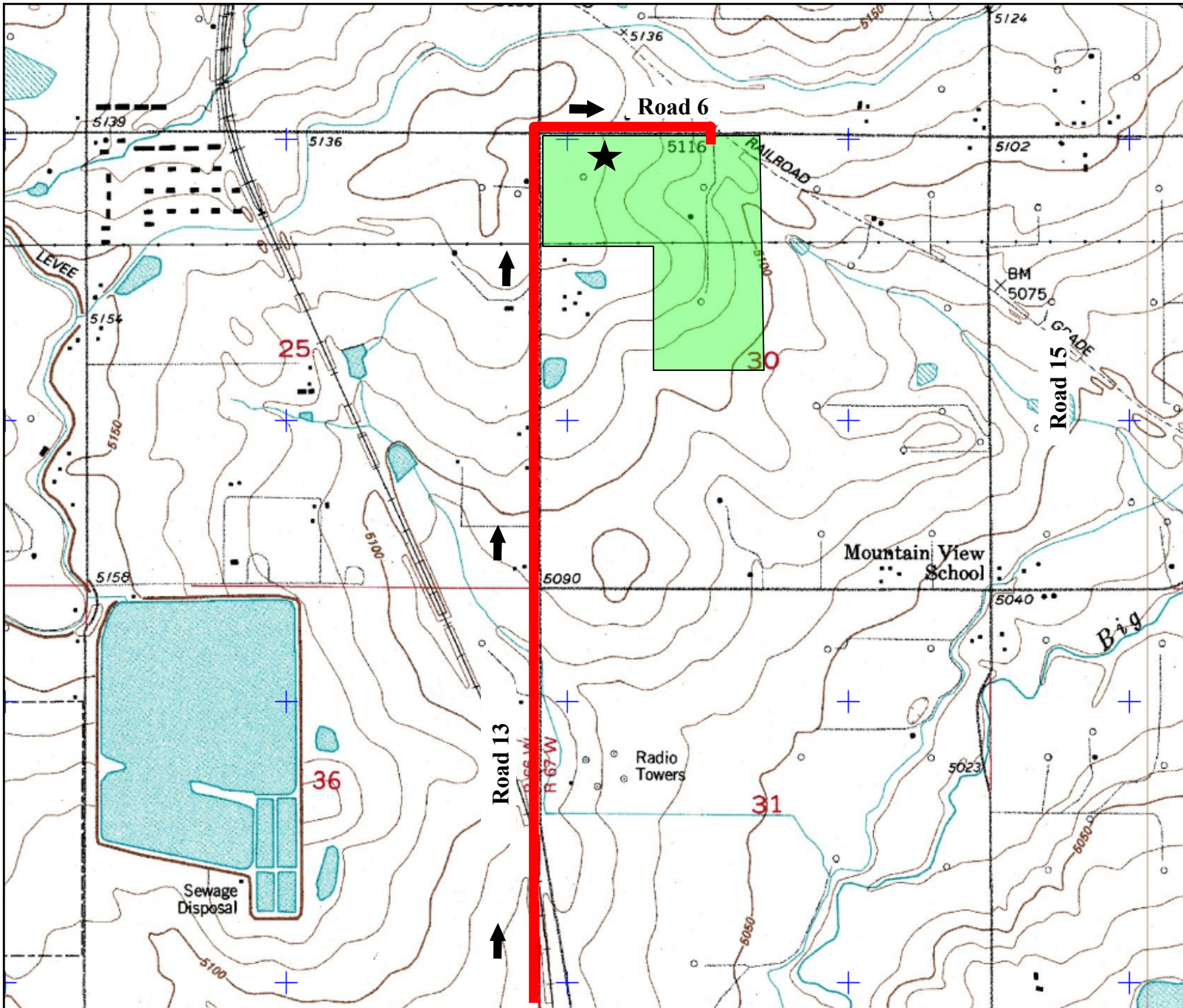
From Interstate 25 in Colorado, take exit 229 (Brighton exit). Go east .4 miles to county road 2. Turn left for 1.9 miles to road 13. Turn left and go 2 miles to road 6. Turn right and go .2 miles and park at the gate. You can also go .4 miles to the road on the right and enter the property. Park by the oil tanks in the field.

Close and lock all gates!



SHERIFF: 645-1850

HOSPITAL: Denver General—436-6000



High
Plains
Sportsmen Club

Gregory's Field

Colorado

★ = Parking Area



For club member use only.
Do not reproduce or distribute.

Property boundaries are
approximate. Reference a
detailed map and look for
property boundary
posting signs.

© COPYRIGHT 2011
High Plains Sportsmen Club