



**High
Plains
Sportsmen Club**

Flaming Field

308284

CANADA GOOSE • DUCK • SNOW GOOSE

This property is located right across the street from the golf course in Ogallala, Nebraska and just across the highway from the Platte River. This field has a circular on it for hunting. Do not hunt near the irrigation pipes on the circular, it is not necessary.

What an excellent piece of property, it just doesn't get any better for goose hunting!



Nebraska

KEITH COUNTY, NEBRASKA

RULES AND REGULATIONS:

- ◆ **DECOY HUNTING ONLY—No sky busting geese.**
- ◆ **No camping—Camping is available along the river on the Ogallala property campsites.**
- ◆ **Stay on the roads – Do not drive on the fields.**
- ◆ **ATV's are OK for transporting decoys into the field.**
- ◆ **Do not hunt near the irrigation pipes.**
- ◆ **Close and lock all gates at all times.**
- ◆ **Please remove all trash including your shell casings.**
- ◆ **Reservations and placards are required on all properties.**



DIRECTIONS:

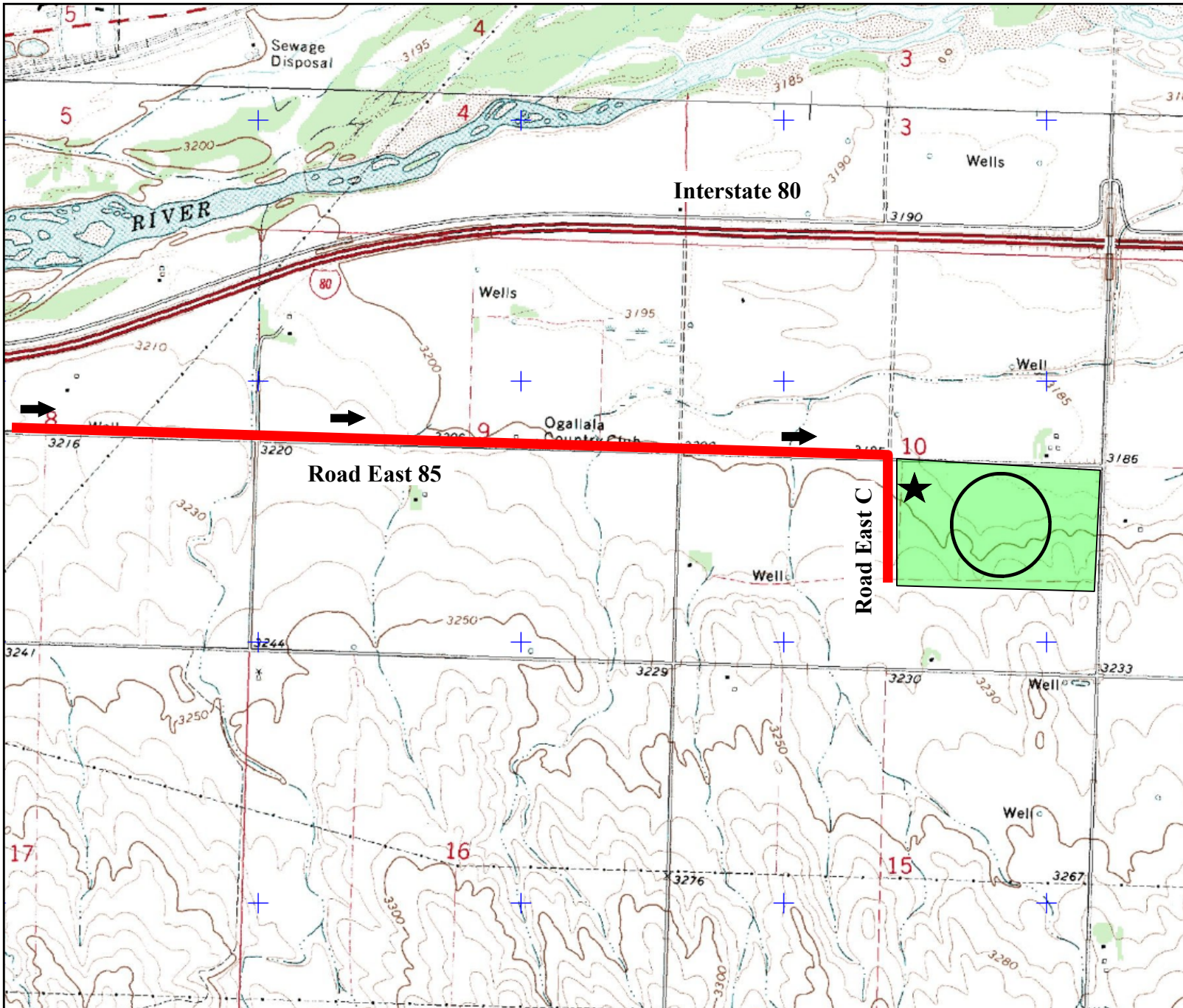
On Interstate 80, take the only exit at Ogallala, Nebraska. Go one block left and cross the highway at the Conoco and go south on road 61 until you reach road East 85. Turn left and go east for approximately 2 miles to the golf course and road East C and turn right. The field on the left is ours where the trees are located. We have the circular in that field.

Close and lock all gates!

SHERIFF: 308-284-2011

HOSPITAL: 308-284-3645





High
Plains
Sportsmen Club

Flaming Field

Nebraska

★ = Parking Area



For club member use only.
Do not reproduce or distribute.

Property boundaries are
approximate. Reference a
detailed map and look for
property boundary
posting signs.

© COPYRIGHT 2011
High Plains Sportsmen Club