



Barber Ranch 696631

DEER • ELK (LATE) • BEAR • ANTELOPE • TURKEY • WATERFOWL

This is a diverse property covered in grassland, scrub oak and cedar trees. There is a deep canyon with water in the bottom and long, steep ridges crossing the property. The ranch will be excellent for deer and for late season cow elk. Turkey hunting will be for toms only, no hens. Geese use the fields and the ponds. Hunting should be on foot to keep game from leaving the property.



HUERFANO COUNTY, COLORADO

RULES AND REGULATIONS:

- ◆ **No open fires of any kind.**
- ◆ **Camping in the Base Camp area only.**
- ◆ **No driving on roads. Please hunt on foot to minimize disturbing game.**
- ◆ **ATV's are OK to pick up game. No motorcycles allowed.**
- ◆ **Please remove all trash including your shell casings.**
- ◆ **Leave gates as you find them.**
- ◆ **No hen turkeys are to be killed on this property.**
- ◆ **Reservations and placards are required on all properties.**



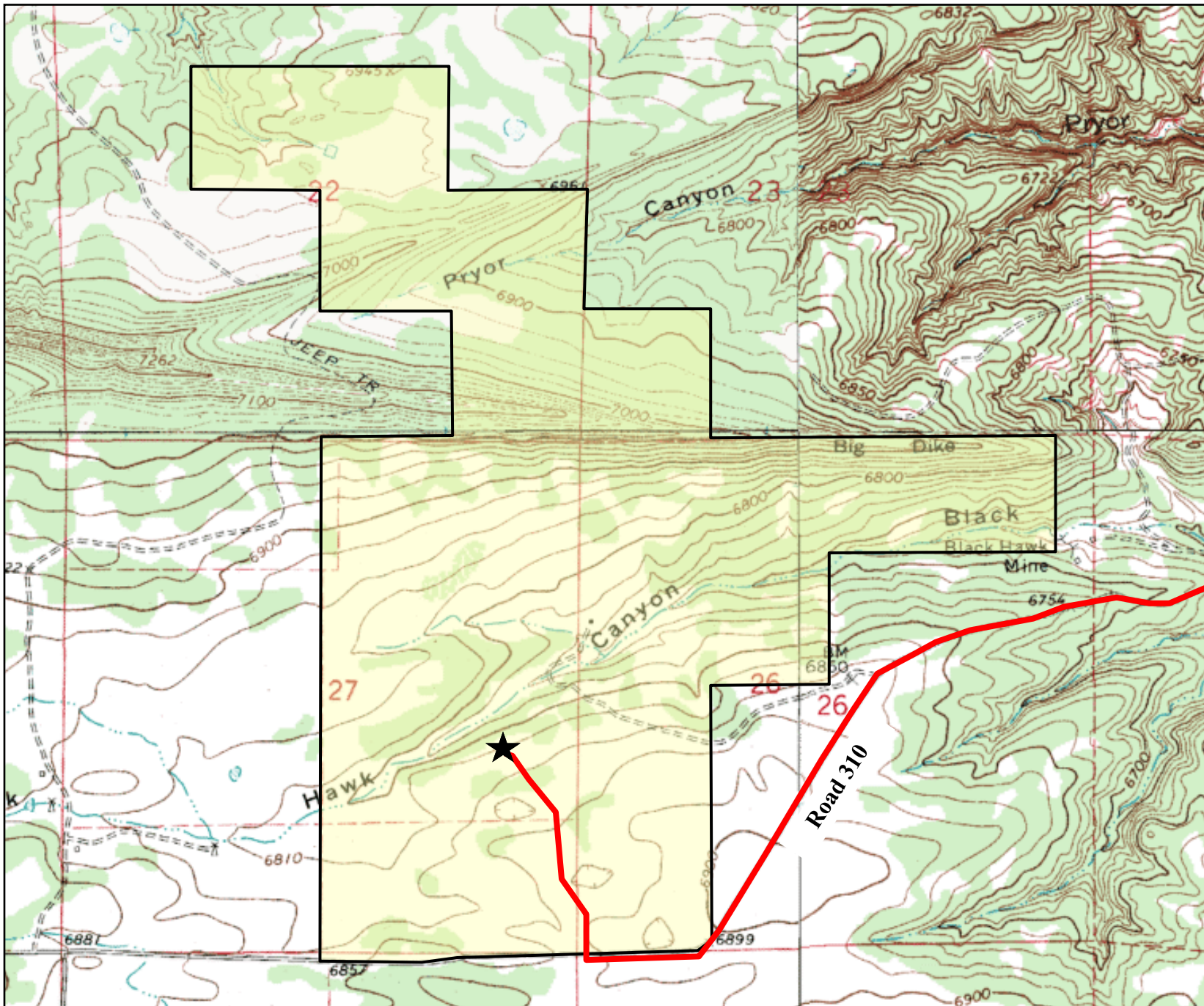
DIRECTIONS:

From I-25 go south of Walsenburg to exit 42 and turn right on road 310. Go approximately 4.5 miles to the driveway on your right hand side. Go approximately 1/2 mile down the driveway to the basecamp which is directly north of the ranch house in the woodlot. There is a water hydrant at the base camp.



SHERIFF: 719-738-1600

HOSPITAL: Spanish Peaks Regional 719-738-5100



High
Plains
Sportsmen Club

Barber Ranch

Colorado

★ = Base Camp



For club member use only.
Do not reproduce or distribute.

Property boundaries are
approximate. Reference a
detailed map and look for
property boundary
posting signs.

© COPYRIGHT 2018
High Plains Sportsmen Club