



High
Plains
Sportsmen Club

Arkansas River Bottom

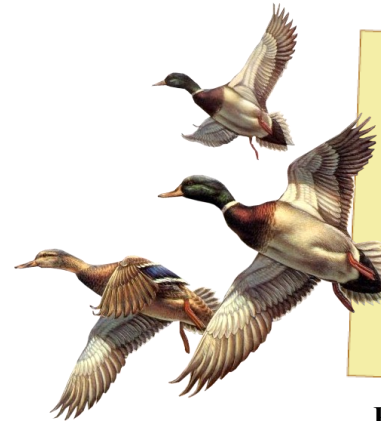
527305

CANADA GOOSE • DUCK • DOVE • FISHING

This property includes nearly a mile of Arkansas River bottom east of Pueblo, Colorado and will produce excellent waterfowl hunting!

There are three blinds located on the river for waterfowl hunting over decoys or for pass-shooting. This property will also be excellent for dove hunting in the fall.

This is a good place to test the waters for brown trout!



PUEBLO COUNTY, COLORADO

RULES AND REGULATIONS:

- ◆ Decoy hunting or pass shooting allowed on this property.
- ◆ Respect other Hunters—Members should arrive at the property early to set up so as not to disturb other hunters.
- ◆ There are three blind areas on the north side of the river. Please specify which blind area when you make your reservation and stay in your area if other hunters are present.
- ◆ No motorcycles or ATV's.
- ◆ Please remove all trash including your shell casings.
- ◆ Reservations and placards are required on all properties.
- ◆ Camping is allowed at the Base Camp area only.
- ◆ No open fires of any kind.
- ◆ Do not trespass on neighboring properties. Be especially cautious on the eastern property line.
- ◆ No turkey or deer hunting allowed on this property.



DIRECTIONS:

On Interstate 25 in Pueblo, Colorado continue south to exit 100A. Go east on Highway 50. Continue east for 13.4 miles to Highway 96. Take Highway 96 east 1.4 miles to first property entrance on the right hand side. This is the first gravel road past the green barn on the right. There will be a High Plains sign next to an open gate. Go .3 miles to the house and parking area.

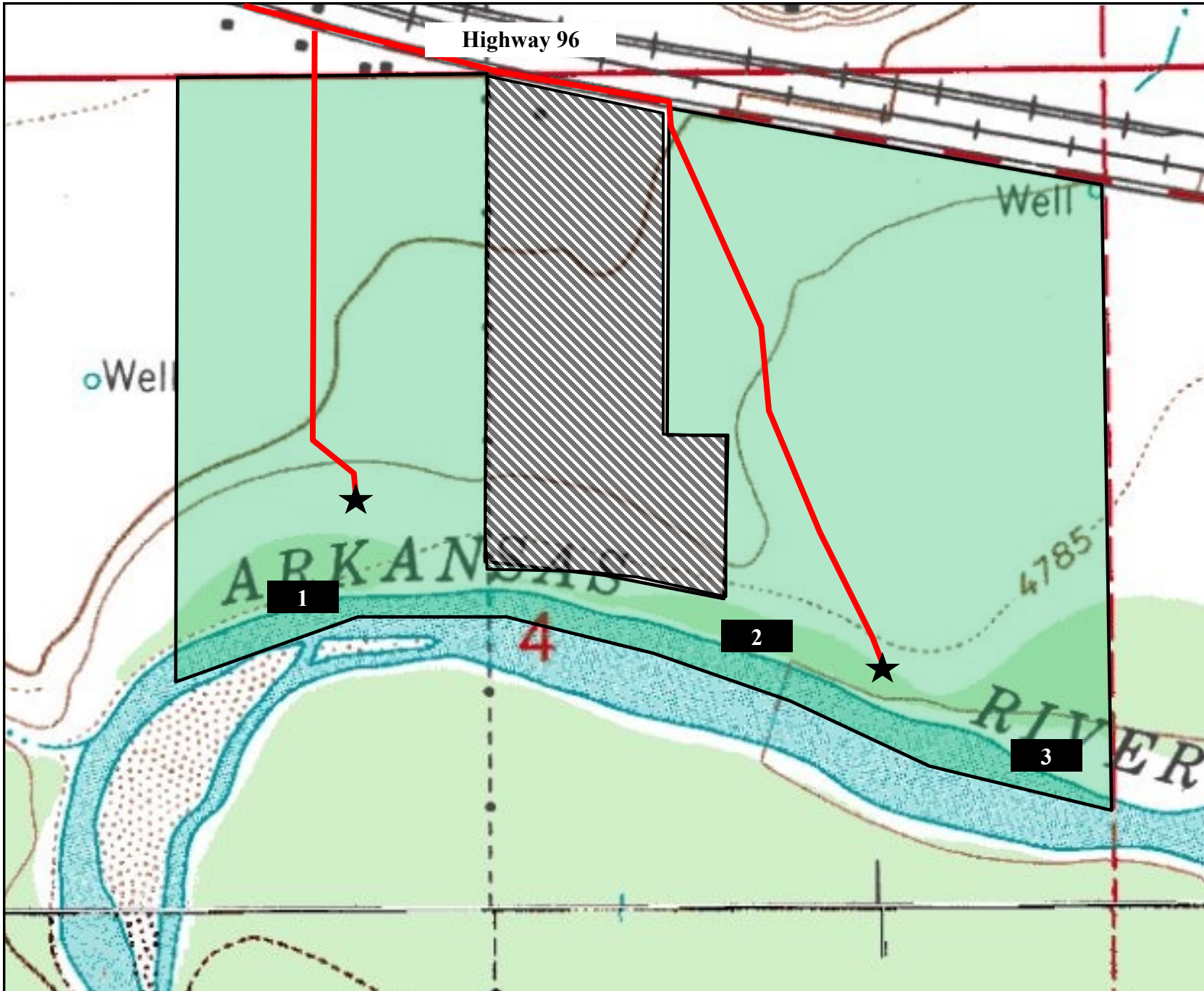
For the second property entrance, proceed .3 miles on Highway 96 from first entrance and turn right. There is a white gate immediately to your left with the High Plains sign. Proceed through that gate to base camp.

If coming from the east, at the town of Boone, Colorado go west on Highway 96 for 4.3 miles to entrance on the left.



SHERIFF: Pueblo County—719-583-6250

HOSPITAL: Parkview Medical Center—719-584-4000



Arkansas River Bottom

Colorado

- = Blind Area
- = Parking Area



For club member use only.
Do not reproduce or distribute.

Property boundaries are approximate. Reference a detailed map and look for property boundary posting signs.

© COPYRIGHT 2019
High Plains Sportsmen Club